

Energy Storage Solution

NRGX3000S24 UPS with Li-ion Battery & Solar

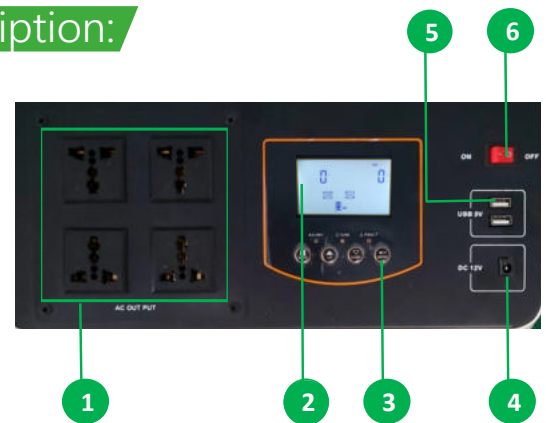


Features:

- ◆ High energy on wheels (3kVA UPS, Li-ion battery)
- ◆ Full LCD display
- ◆ High Input Voltage Range
- ◆ High efficiency
- ◆ Plug & play unit, Easy installation
- ◆ Pure sine wave for your sensitive devices
- ◆ Fast charging
- ◆ USB Port for Charging electronic devices
- ◆ 4 Output Socket

User Panel Description:

1. AC Output
2. LCD Display
3. Control Keys
4. DC 12V Output
5. USB 12W
6. INV ON/OFF Key



Features higher capacities for greater compatibility with more power-hungry devices, and the latest in USB-C Power Delivery capable of charging larger USB devices like laptops.



Includes pre-installed solar charging optimization module that functions as a maximum power point tracker (MPPT), resulting in up to 40% faster charge times.



With LiFePO4 lithium cells, known for stability and safety, monitored by a state-of-the-art battery management system that prevents over-charge, over-current, and short circuiting.



| MODEL | NRGX3000S24 | | |
|-----------------|---|---|----------|
| Inverter | Rated power | 3kVA | |
| | Output voltage waveform | Pure sine wave | |
| | Output voltage regulation On Battery Mode | 230Vac \pm 5% | |
| | Output frequency | 50Hz / 60Hz (\pm 0.2Hz) Auto Sensing | |
| | Peak efficiency | 92% | |
| | Nominal DC input voltage | 24Vdc (\pm 0.3) | |
| | Standby Consumption | < 25W | |
| PV Input | Max solar power input | 1800W | |
| | PV max charging current | 60A (\pm 3A) | |
| | Combined charging current | 80A (\pm 4A) | |
| | Max efficiency | 98.0% max | |
| | PV array open circuit voltage | 145VDC | |
| | PV Array MPPT Voltage Range | 30~120VDC | |
| AC Input | AC input voltage | 230Vac \pm 5% | |
| | Input Voltage Range | 180-280V AC | |
| | Nominal input frequency | 50Hz / 60Hz (Auto detection) | |
| | Transfer time | <10ms (UPS, VDE), <20ms (Typical) | |
| AC Charge | Charging current @ Nominal input voltage | 20A/30A (\pm 4A) | |
| | Charging Algorithm | 4-step (Li) | |
| Output | AC output | 230Vac (Socket *4pcs) | |
| | Type-C | DC output*1pcs | |
| | USB (5V 2.4A) | DC output*2pcs | |
| | USB (12V 1A) | DC output*1pcs | |
| Lithium Battery | Battery type | LiFePO ₄ | |
| | Standard charging & discharge current | 50A | |
| | Operation temperature | Charge | 0~45°C |
| | | Discharge | -10~60°C |
| Dimension | Product Size (LxWxH) (mm) | 300x350x530 | |
| | Net Weight (kg) | 37.2Kg | |

*Specifications are subject to change without prior notice.